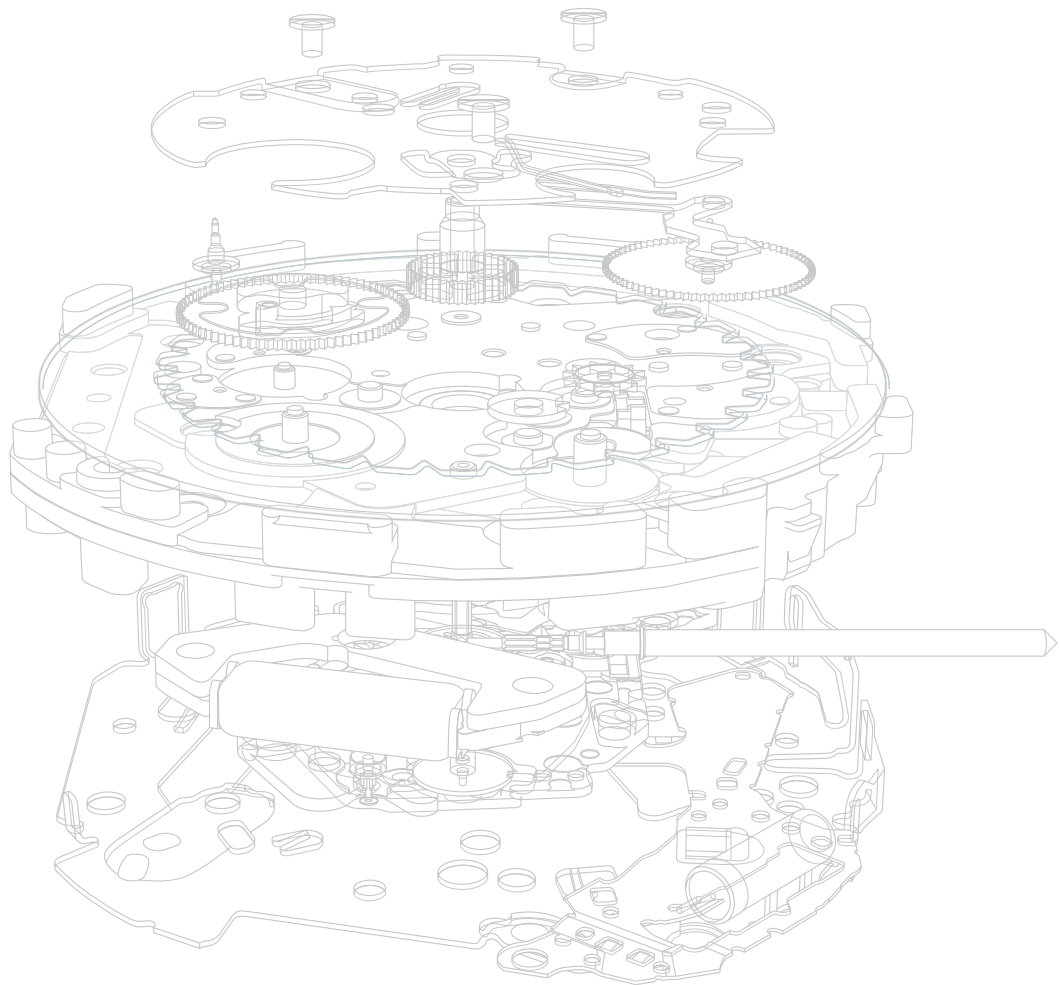


2017-2018
MUSCLE
MOVEMENT

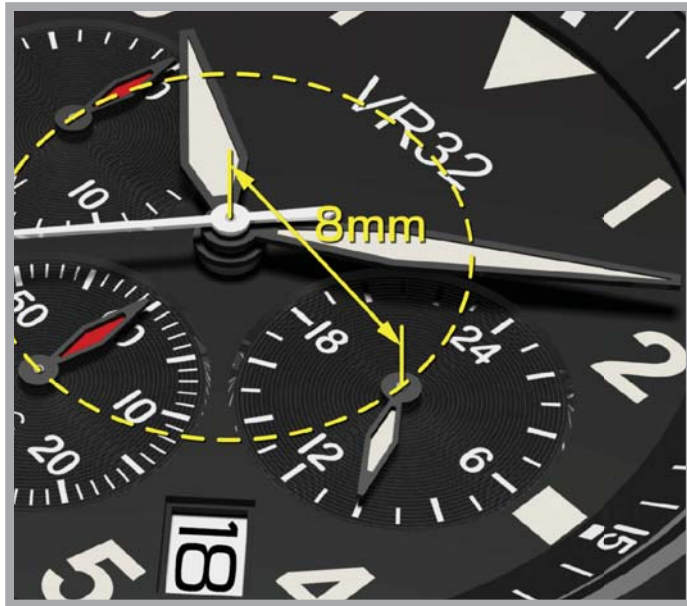


MUSCLE MOVEMENT

CLEAR & WIDE VIEW - BALANCED SUBDIAL POSITION

DISTANCE BETWEEN CENTER TO SUBDIAL	
VR SOLAR CHRONOGRAPH :	8.00mm
VR CHRONOGRAPH :	8.00mm
VX9/7 MULTI-FUNCTION :	8.20mm
VL SMALL SECOND :	8.00mm

SOLAR CHRONO	CHRONO	MULTI-FUNCTION	SMALL SEC.	CALENDAR
--------------	--------	----------------	------------	----------



BIGGER CALENDAR

BIGGER CALENDAR SIZE	
VR SOLAR CHRONOGRAPH :	3.20 x 2.30mm
VR CHRONOGRAPH :	3.20 x 2.30mm
VL SMALL SECOND :	3.20 x 2.30mm
VX6 CALENDAR VX62E :	3.20 x 2.30mm
VX63E :	8.85 x 2.30mm

SOLAR CHRONO	CHRONO	MULTI-FUNCTION	SMALL SEC.	CALENDAR
--------------	--------	----------------	------------	----------



HIGH TORQUE

	<u>SECOND</u>	<u>MINUTE</u>
VR SOLAR CHRONOGRAPH :	0.09μN.m	0.9μN.m
VR CHRONOGRAPH :	0.09μN.m	0.9μN.m
VX9/7 MULTI-FUNCTION :	0.1μN.m	0.9μN.m
VL SMALL SECOND :	0.05μN.m	0.9μN.m
VX6 CALENDAR :	0.1μN.m	0.9μN.m

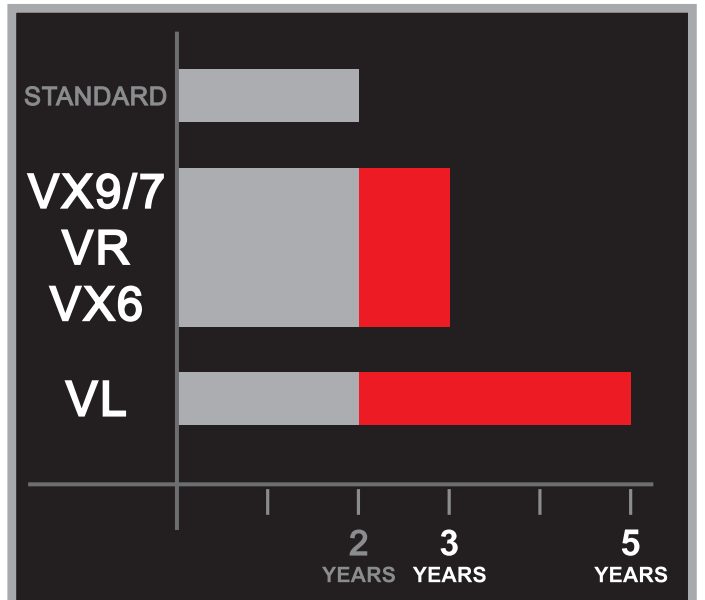
SOLAR CHRONO	CHRONO	MULTI-FUNCTION	SMALL SEC.	CALENDAR
--------------	--------	----------------	------------	----------



LONGER BATTERY LIFE

MUSCLE MOVEMENT CAN RUN MORE THAN 3 YEARS EVEN WITH HIGH TORQUE

SOLAR CHRONO	CHRONO	MULTI-FUNCTION	SMALL SEC.	CALENDAR
--------------	--------	----------------	------------	----------



VR SOLAR CHRONOGRAPH



VR42
MUSCLE
MOVEMENT

VR CHRONOGRAPH



VR32

MUSCLE
MOVEMENT

VR **NEW** CHRONOGRAPH



VR3H

MUSCLE
MOVEMENT

VX9/7 MULTI-FUNCTION



VX9J

MUSCLE
MOVEMENT

VL SMALL SECOND



VL58

MUSCLE
MOVEMENT

VX6 CALENDAR



VX62E

MUSCLE
MOVEMENT

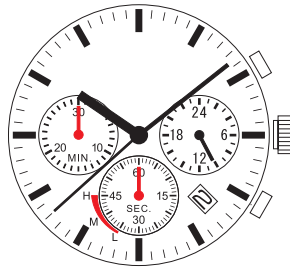
MOVEMENT SIZE : 13 1/2'''



VR42

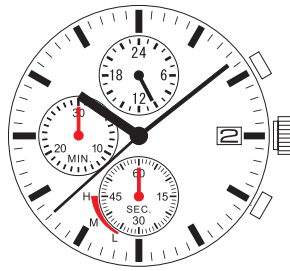
VR42

Height : 4.52mm
 1/1 sec. chronograph
 Power storage indicator
 Power storage : 4 months



VR43

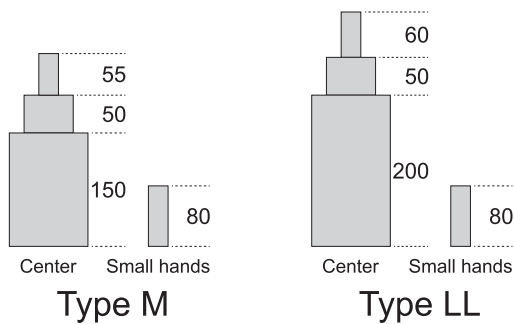
Height : 4.52mm
 1/1 sec. chronograph
 Power storage indicator
 Power storage : 4 months



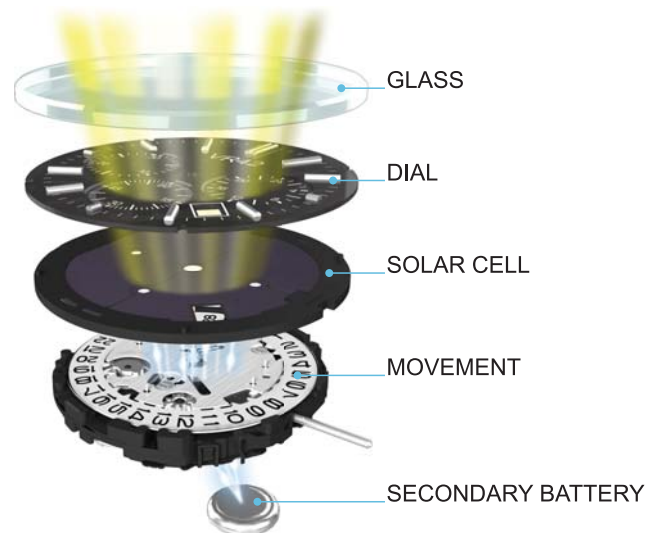
Hands Height Variation

UNIT : 1 = 1/100mm

VR42
 VR43



LIGHT SOURCE



CHRONOGRAPH

VR

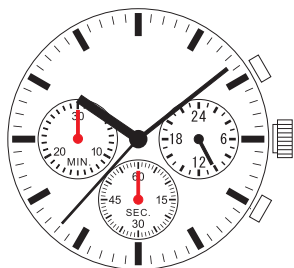
MOVEMENT SIZE : 13 1/2'''



VR32

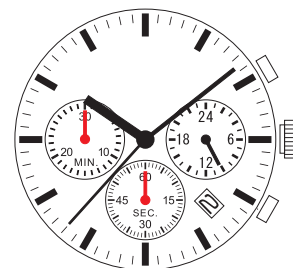
VR31

Height : 3.97mm
1/1 sec. chronograph
Battery life : 3 years
(SR920SW)



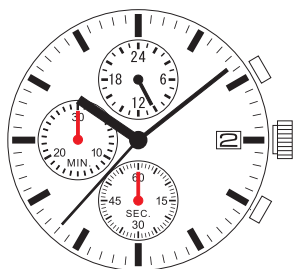
VR32

Height : 3.97mm
1/1 sec. chronograph
Battery life : 3 years
(SR920SW)



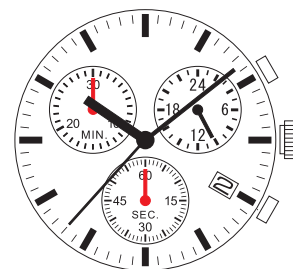
VR33

Height : 3.97mm
1/1 sec. chronograph
Battery life : 3 years
(SR920SW)



VR34

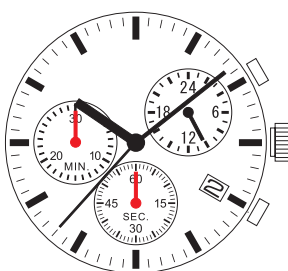
Height : 3.97mm
1/1 sec. chronograph
Battery life : 3 years
(SR920SW)



NEW

VR35

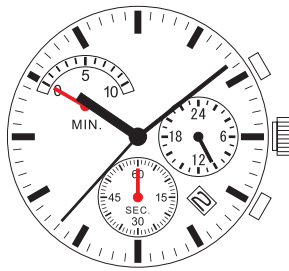
Height : 3.97mm
1/1 sec. chronograph
Battery life : 3 years
(SR920SW)



MOVEMENT SIZE : 13 1/2'''

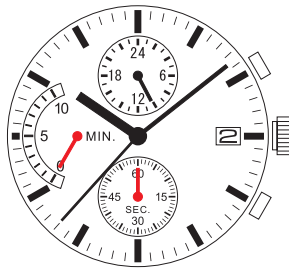
VR3G

Height : 3.97mm
 1/1 sec. chronograph
 10 minutes retrograde
 Battery life : 3 years
 (SR920SW)



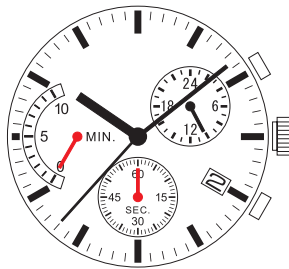
NEW VR3H

Height : 3.97mm
 1/1 sec. chronograph
 10 minutes retrograde
 Battery life : 3 years
 (SR920SW)



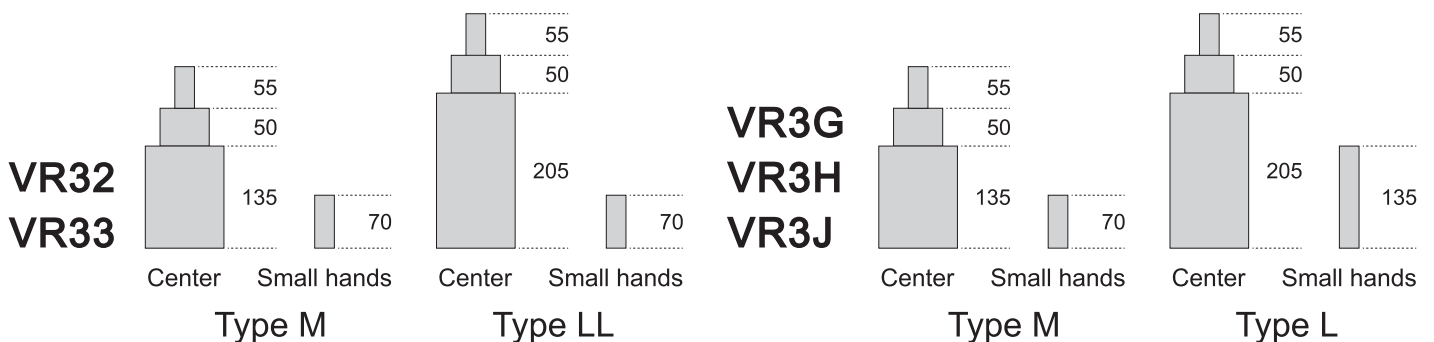
NEW VR3J

Height : 3.97mm
 1/1 sec. chronograph
 10 minutes retrograde
 Battery life : 3 years
 (SR920SW)



Hands Height Variation

UNIT : 1 = 1/100mm



MULTI - FUNCTION

VX9/7

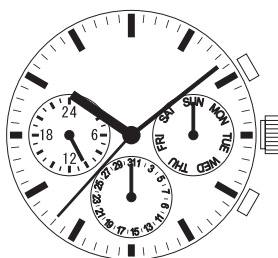
MOVEMENT SIZE : 12 3/4"



VX9J

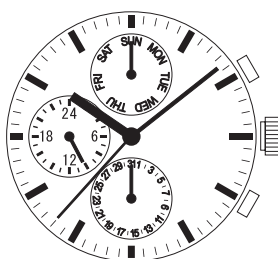
VX9J / VX7J

Height : 3.99 mm
 Day / Date / 24 hour
 Pusher (VX9J)
 Battery life : 3 years
 (SR927SW)



VX9N / VX7N

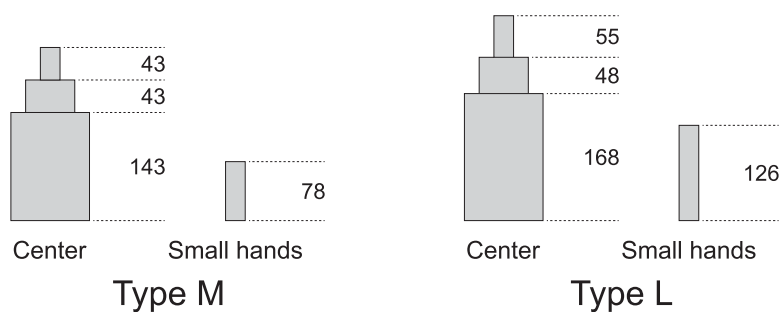
Height : 3.99 mm
 Day / Date / 24 hour
 Pusher (VX9N)
 Battery life : 3 years
 (SR927SW)



Hands Height Variation

UNIT : 1 = 1/100mm

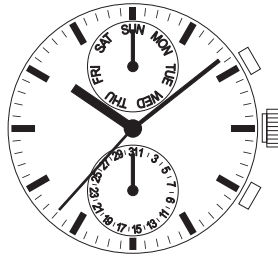
VX9J
 VX9N
 VX7J
 VX7N



MOVEMENT SIZE : 12 3/4''

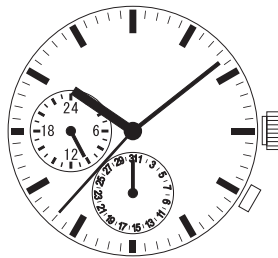
VX9P / VX7P

Height : 3.99 mm
Day / Date
Pusher (VX9P)
Battery life : 3 years
(SR927SW)



VX9R / VX7R

Height : 3.99 mm
Date / 24 hour
Pusher (VX9R)
Battery life : 3 years
(SR927SW)

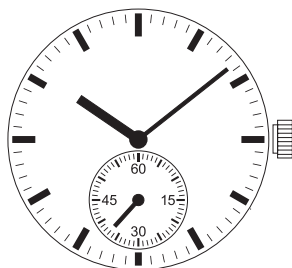




VL58

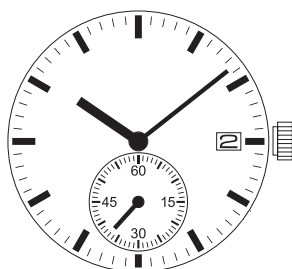
VL57

Height : 3.97mm
 2 hands
 Small second
 Battery life : 5 years
 (SR920SW)



VL58

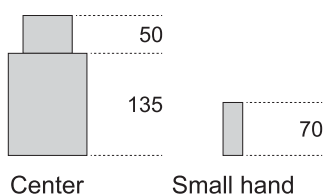
Height : 3.97mm
 2 hands / Date
 Small second
 Battery life : 5 years
 (SR920SW)



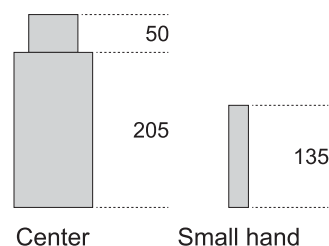
Hands Height Variation

UNIT : 1 = 1/100mm

VL57
 VL58



Type M



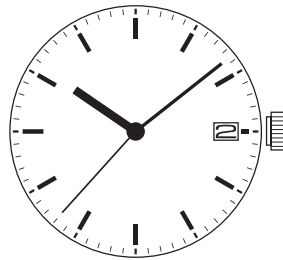
Type L



VX62E

VX62E

Height : 3.63mm
3 hands / Date
Battery life : 3 years
(SR927SW)



VX63E

Height : 3.85mm
3 hands / Day / Date
Battery life : 3 years
(SR927SW)



EPSON HONG KONG LIMITED

Unit 715 - 723 Trade Square,
681 Cheung Sha Wan Road,
Cheung Sha Wan, Kowloon, Hong Kong
TEL (852) 2585-4600
FAX (852) 2827-4346
E-MAIL epsonmv@ehk.epson.com.hk

EPSON (CHINA) CO., LTD.

SHENZHEN BRANCH

T2 Tower Floor 8,
Room 804 - 805, Ali Center, No.3331
South RD (Shenzhen Bay), Nanshan District, Shenzhen
POST CODE 518054
TEL (86) 755-3299-0588
FAX (86) 755-3299-0560
E-MAIL epsonmv@ehk.epson.com.hk

EPSON HONG KONG LIMITED

SINGAPORE BRANCH

72 Bendemeer Road,
#03-23 Luzerne,
Singapore 339941
TEL (65) 6256-9448
FAX (65) 6254-9448
E-MAIL epsonmvsin@ehk.epson.com.hk

EPSON HONG KONG LIMITED

INDIA BRANCH

206 Sanghavi Square,
2/F, Opp. Bank of Baroda,
M.G. Road, Ghatkopar (West),
Mumbai - 400 086 India
TEL (91) 22-6525-2571, (91) 22-2515-0008
FAX (91) 22-2515-0007
E-MAIL epsonmvind@ehk.epson.com.hk

<http://movement.epson.com.hk/>



recycle paper and soy ink are used

ISO9001

RoHS Compliant

Mercury Free