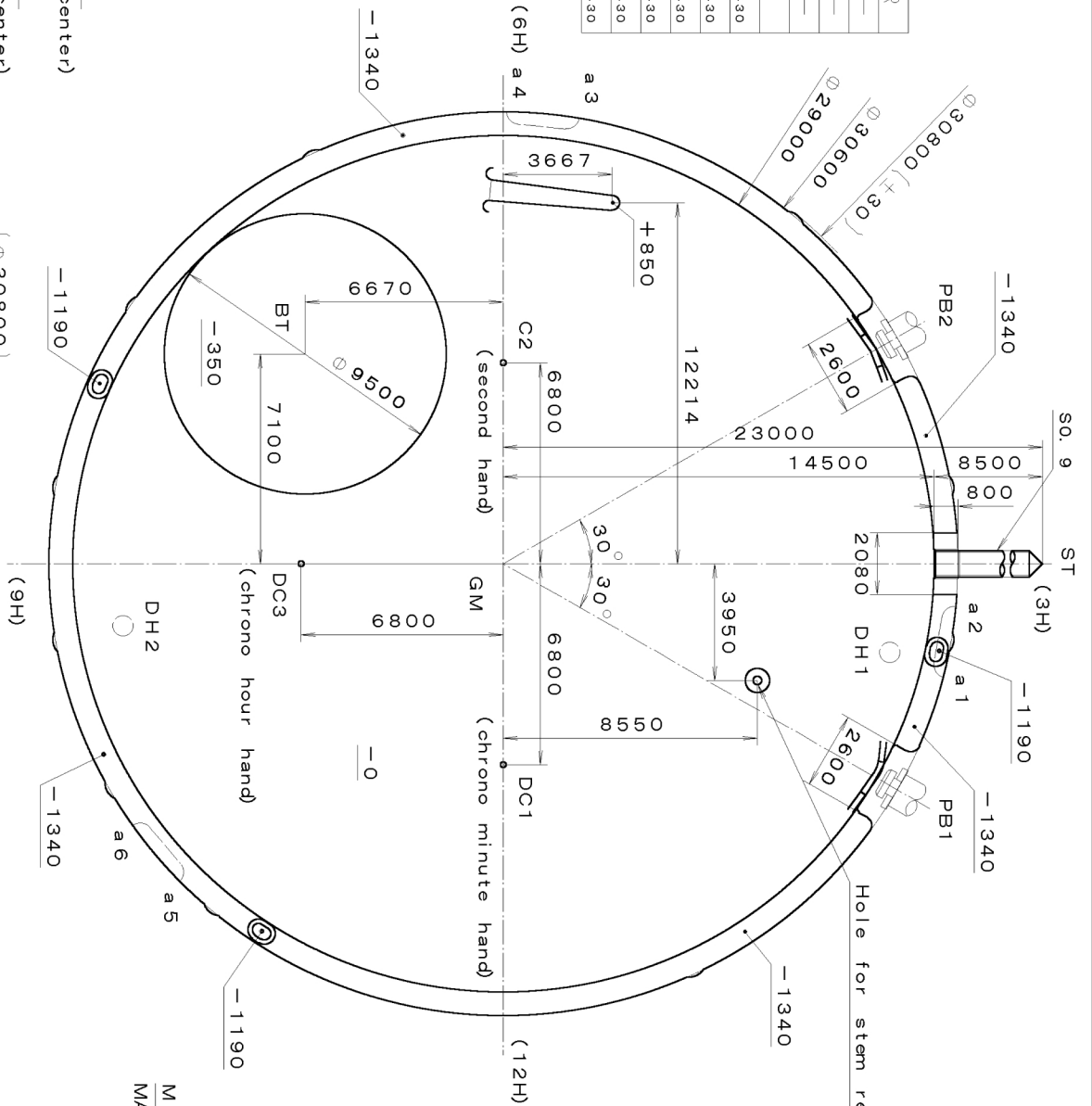


DH1~DH2=25816 (±20)
Stroke for PB must be minimum 600 [$+^{+200}$] μm

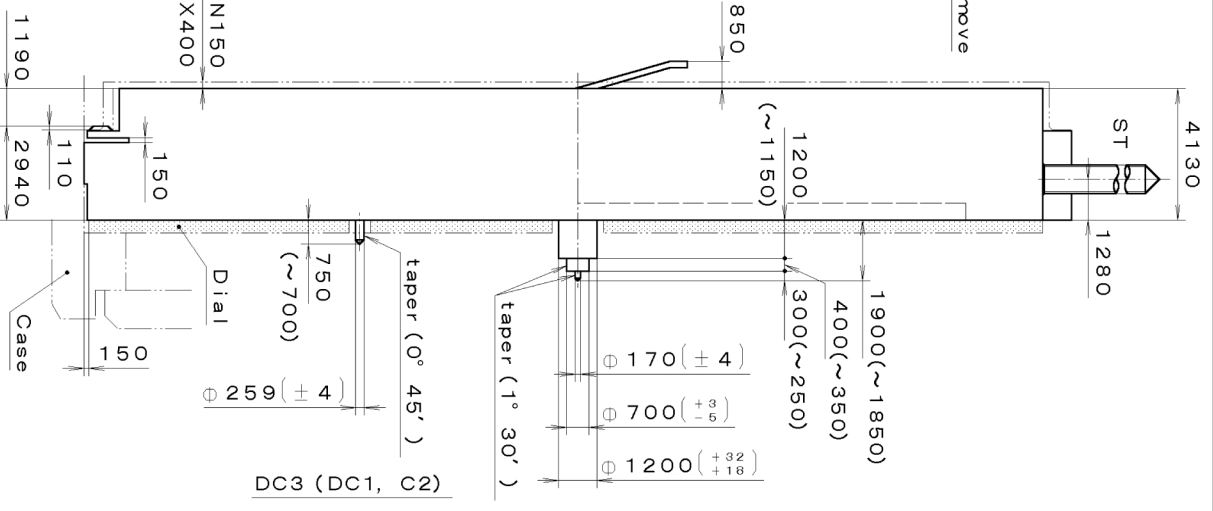
Coordinates			
Mark	X	Y	R
GM	0	0	—
DH1	3000	13000	—
DH2	2100	-12800	—
a1	3441	14908	430
a2	1865	15186	430
a3	-15151	2129	430
a4	-15291	535	430
a5	10434	-11190	430
a6	9208	-12219	430



Section PB1, 2

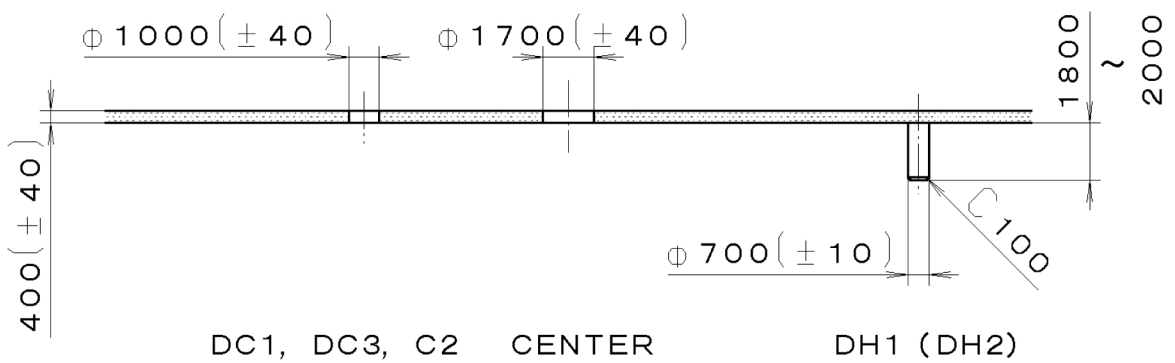
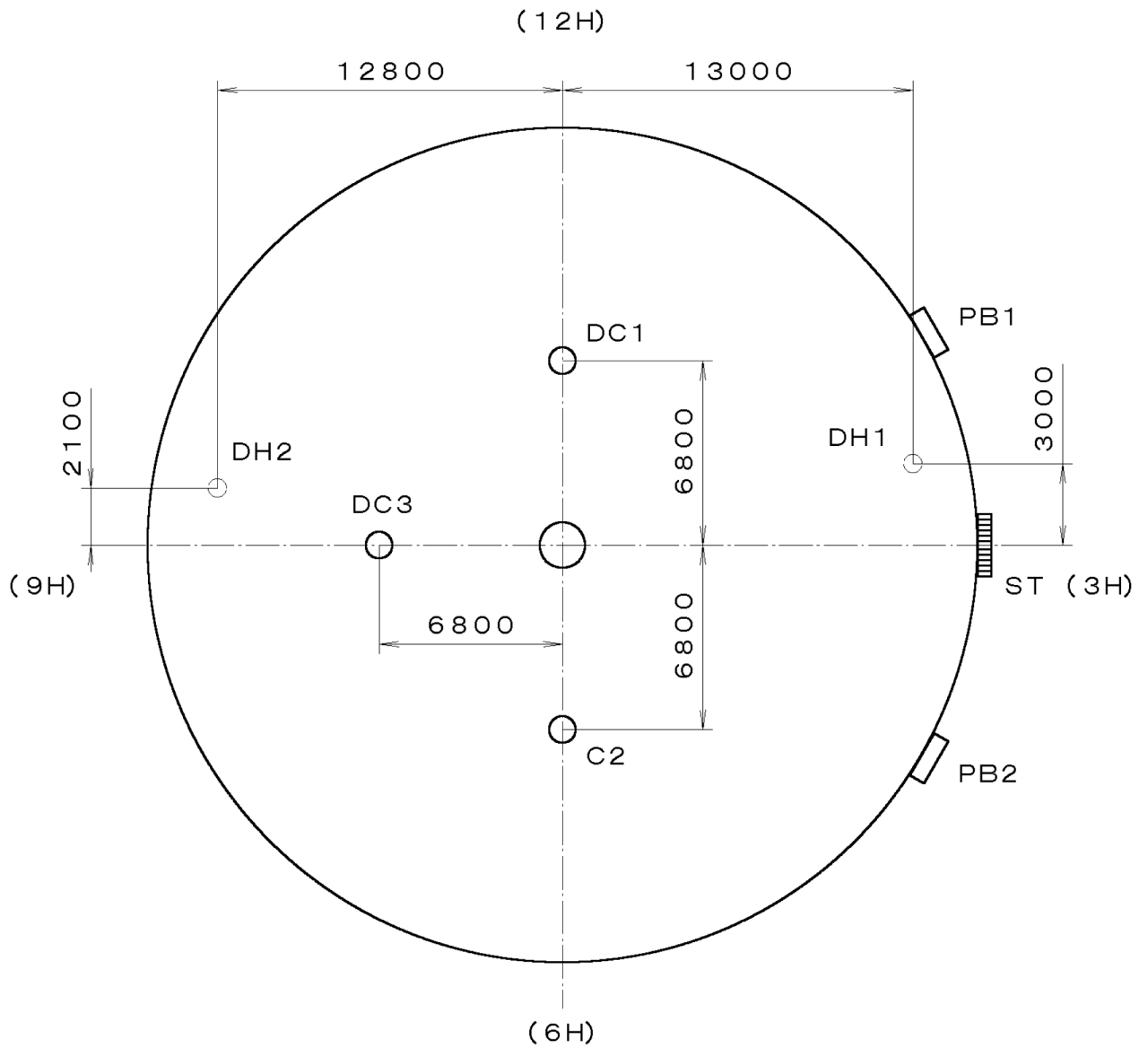
Section a1~a6

Quantity	1/1000 mm	Cal. No. : OS30
Unit	6:1	Parts:
Scale		Name:
Date		Frame for Case
Drawn		Drawing No. : OS30C0000
Checked	T. Hiruta	
Approved		
Material		
Heat Treatment		
Hardness		
Plating		
General Tolerances		
Dimensions		
Angles		



MIYOTA

This drawing is provisional and subject to our reconfirmation and/or revision without notice.

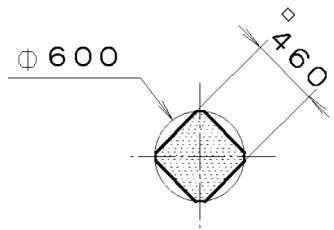


OS30-00A (01) *** (2100 1121) 00-07-03

7		Quantity		Cal. No. :	OS30-00A
6		Unit	1/1000 mm	Parts:	
5		Scale	4:1	Name:	Indications for Dial
4		Date		Drawing No. :	OS30D000
3		Drawn			
2		Checked	T. Hiruta		
1		Approved			
Material					
Heat Treatment		General Tolerances		MIYOTA	
Hardness		Dimensions			
Plating		Angles			

This drawing is provisional and subject to our reconfirmation and/or revision without notice.

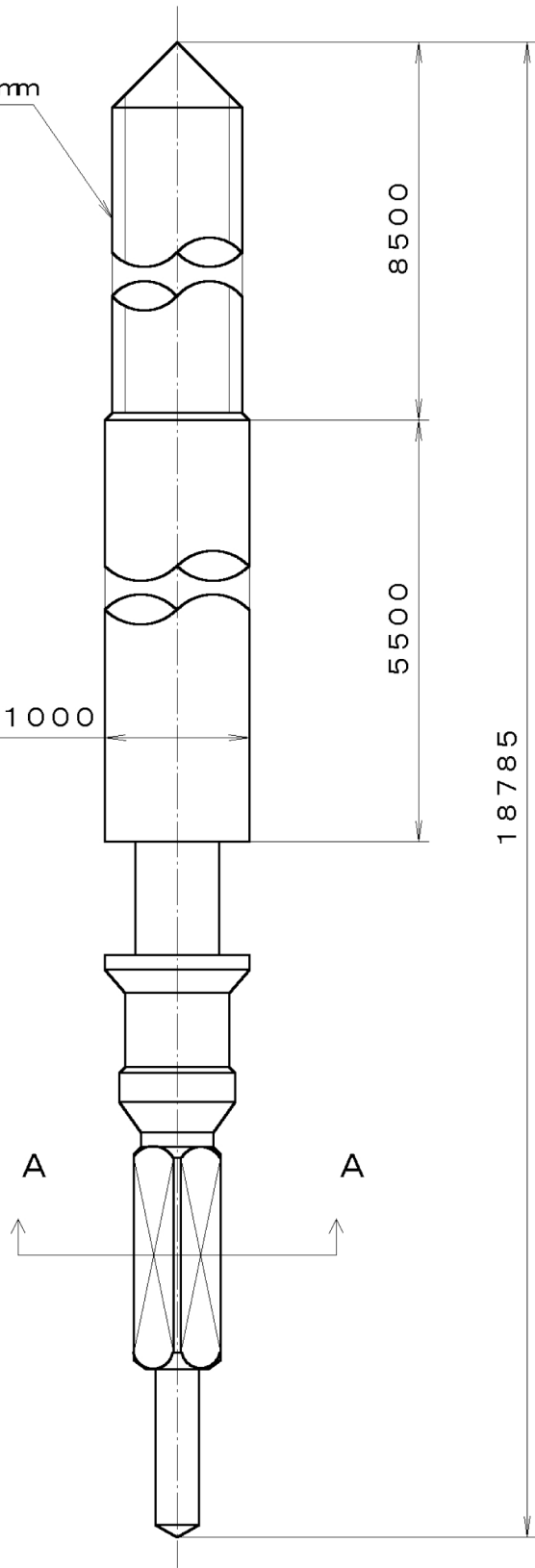
*** T I P W (01) *** (2100 1121) 00-07-06



Section A-A

S.O. 9, P=0. 225mm

Φ 1000



7		Quantity		Cal. No. :
6		Unit	1/1000 mm	Parts:
5		Scale	20:1	
4		Date		Name:
3		Drawn		
2		Checked	T. Hiruta	Drawing No. : 4530S000
1		Approved		
Material				MIYOTA
Heat Treatment		General Tolerances		
Hardness		Dimensions		
Plating		Angles		